



The SKYHOOK



HOLIDAY CITY AMATEUR RADIO CLUB

www.hcarc.us

JUNE 2013

Toms River, NJ

Program for Our Next Meeting

Field Day is coming. As always, it's on the 4th full weekend of June. We, our friends, neighbors, other family members, and those of us who don't get on HF from our home stations, enjoy the fun and fellowship of setting up antennas and operating HF stations in the park. So, at our next meeting, we'll be making plans for Field Day.

This year, it will be the same park, but the park has a new name, **Whispering Pines**. It's at the end of Selkirk Ave. (Berkeley Twp.), Toms River, NJ 08757

For Your Calendar

Jun 06	Regular Meeting
Jun 10	Lunch
Jun 22	Field Day begins
Jun 24	Lunch

Happy Birthday to:

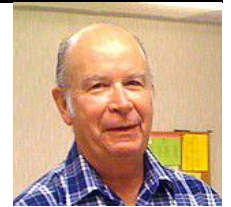
Mike Agnostinello KC2MTT

Mike Graber KD2CTX

Russ Young WA2VQV



The President's Corner



As I write this month's President's Message it is Memorial Day, a day to give thanks and remember those who have given so much to ensure the freedoms that we all enjoy today.

I survived Dayton and had a great time. Will say more about Dayton at our next meeting.

Hopefully we are about done with winter. Our next meeting will be our Field Day planning meeting. At a recent club luncheon we had a question asked by one of our newer hams on coax, so we will spend some time covering the subject.

73, Carl [w2ptz](#)



Andy Murin KA2FTF, Silent Key

Folks,

It is my sad duty to report the passing of another club member, Andy Murin, KA2FTF. This evening Andy's wife Audrey called to tell me that Andy lost his battle with cancer yesterday.

- Larry Puccio (May 6)

NEXT MEETING

Thursday June 6 at 7:00PM

Meeting Rm. #1 at

Holiday City South Clubhouse

Mule Rd. at Santiago Drive

Correction

The table of "2-meter Repeaters In and Around Ocean County" had some typos. It should have been:

Freq Rptr's	Input Out	CTCSS Offset	Call (PL) Sign	Location of antenna
145.170	-600	131.8	WA2RES	Manchester
145.470	-600	127.3	KC2QVT	Chatsworth
146.445	+1000	131.8	KC2GUM	Toms River
146.490	+1000	141.3	W2NJR	Brick
146.655	-600	127.3	WA2JWR	Toms River
146.700	-600	192.8	N2NF	Tuckerton
146.835	-600	127.3	N2OO	Manahawkin
146.910	-600	127.3	W2DOR	Toms River
146.955	-600	103.5	W2RAP	Lakewood
147.345	+600	127.3	WA3BXW	Camden

For a complete list of all local coordinated repeaters, see www.arcc.org for Southern NJ and Eastern PA, and www.MetroCor.net for Northern NJ and Metropolitan NYC.



Ocean County ARES® News

On Wednesday, June 5th there will be a special Homeland Security exercise involving Atlantic, Burlington, Camden, Cape May, Cumberland, Gloucester, Mercer, Monmouth, Ocean and Salem counties. The exercise duration is expected to last up to 4 hours and should start around 1:00 PM. The intent of the exercise is to test Amateur Radio capability to move information between EOC's and Public Safety Answering Points (PSAPS). Various modes of operation will be used including FM voice, SSB voice, APRS, D-Star, Winlink and NBEMS. All activity will be at the EOC's and PSAPS and no action will be required by operators at their homes. In Ocean County K2PSG, KC2GKO and WX2NJ will be participating at the EOC. Any other Ocean County ARES/RACES operators wishing to participate/assist at the EOC, please contact K2PSG.

The next meeting of Ocean County ARES will be on Wednesday, June 19th at 7:00 PM at the Ocean County EOC, Robert J. Miller Airpark, Berkeley Township. There will be no training net that evening because of the meeting.

As most of you may be aware, the majority of emergency sirens for Oyster Creek failed to operate during Sandy because of widespread power outages. The original sirens were all AC, 3 phase powered units. New, electronic sirens have been installed to replace the original AC sirens and can be operated from single phase AC and battery backup power sources. These 42 sirens located in the 10 mile Emergency Planning Zone (EPZ), in my opinion, are also "screamers" and are much louder than the original units.

There are several full volume three minute siren tests planned for the end of May:

Thursday, May 23rd at 9:30 AM

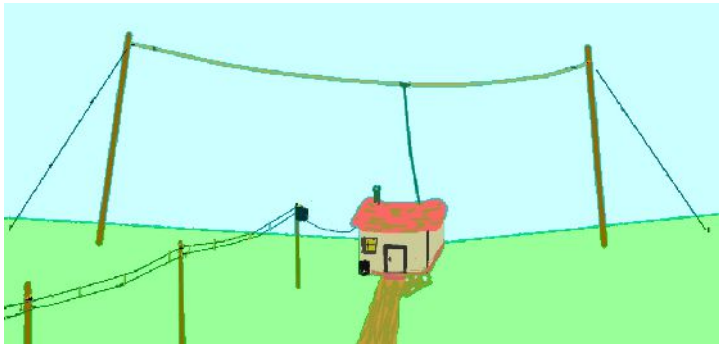
Thursday, May 23rd at 2:30 PM

Wednesday, May 29th beginning at 9:00 AM and occurring every hour for up to 4 soundings throughout the day. In the event of inclement weather, these tests will occur Thursday, May 30th at the same times. I'm not sure why inclement weather would delay the test, but this is the schedule published by Exelon and the Office of Emergency Management.

I would like to thank all the operators who participated in the MS-170 Bicycle Tour as it passed through our area and utilized several local repeaters on May 18th and 19th. At least the heavy rain held off on Saturday, but the riders were treated to a soaking day of riding on Sunday on their way to Cape May. There was an abundance of road problems on Route 35 due to uneven road conditions and construction debris. At one point there were 30 riders with flat tires. One gent had the pleasure of getting a puncture of his rear tire with a drywall screw, which even imbedded itself into the rim. As most residents of Ocean County are well aware, Sandy storm debris and construction materials are everywhere, especially on the coastal roadways.

- Bob Murdock, WX2NJ

Ocean County Amateur Radio Emergency Service® EC



Dear Elmer,

I'm getting a very high SWR reading. It was OK before I made some changes. What's wrong?

Dear Friend,

If your SWR is over 10, you probably have a very badly mistuned or damaged antenna, or an open, or a short between the SWR meter and the antenna. If the SWR is between 3 and 10, you should be able to get it down well below 3 with an antenna tuner or by trimming the antenna.

Assuming it's over 10, try the following:

- ✓ Visually inspect your setup to see if it's connected the way you think it is.
- ✓ Is there an open or short in the line between the SWR meter and the antenna?
- ✓ Is your antenna disconnected, damaged or even lying on the ground?
- ✓ Is your ground disconnected?
- ✓ Is the SWR meter connected backwards?
- ✓ Is the frequency within the SWR meter's useful frequency range?
- ✓ Is the SWR meter actually connected between the antenna tuner and the antenna, instead of at the radio?
- ✓ Is the antenna tuner set up wrong?
- ✓ Are you on some other band?
- ✓ Is the antenna tuner connected wrong?
- ✓ Is your lightning arrestor shorted?

You can test your SWR meter by connecting a dummy load to its output.

Try replacing items (like cables, SWR meter, tuner) with similar items that you trust.

Finally, if none of that helps, ask for more help.

73, Elmer



HCARC Official Badge Ordering

The club's official badge maker is the Capital Engraving Co. in Longview, WA. To order a badge, simply call Capital at 1-800-628-4985 after 1PM M-F. All that is required is to give your call and first name and your mail address. Use your credit card to pay. Cost is \$12.50 plus \$2 S&H. Al Ross WA7UQE will take care of you

Our VE Crew

Murray [KD2IN](#) John [K2JWH](#), Ed [W1EAP](#), Larry [K2ODY](#), John [KQ4WR](#), Stan [KB2PD](#), Steve [N2WLH](#), Kevin [W2FA](#), Walter [KC2LFD](#).

License exams are given on the second Wednesday of each month at Holiday City South Clubhouse, Bldg A, which is at the corner of Mule Rd. and Santiago Dr.

Directions: Go to Mule Rd. and to the corner of Santiago Dr. Turn into Santiago Dr., then into the parking lot in front of the pool. Enter bldg. on right

CLUB COMMITTEES

Refreshments: Ed Baranowski

Webmaster: Steve [N2WLH](#), Carl [W2PTZ](#)

Publicity: Ed [W1EAP](#)

Programs: Murray [KD2IN](#)

Sunshine: Dave [WA2DJN](#)

Field Day: Larry [K2ODY](#)

VE Sessions: Larry [K2ODY](#) & the crew

Skyhook: John Roberts [KQ4WR](#)

Fund Raising: vacant

Membership: Murray [KD2IN](#)

HOLIDAY CITY AMATEUR RADIO CLUB

Toms River, New Jersey

Web Site www.hcArc.us

President	Carl Lee	W2PTZ	732 575-7558
Vice President	vacant		
Secretary	John Hann	K2JWH	609 660-0985
Treasurer	Larry Puccio	K2ODY	732 349-2950
Executive Board	Len Bicher	N2LFT	732-269-8678
Executive Board	John Roberts	KQ4WR	732-350-1162
Executive Board	Ed Picciuti	W1EAP	732 736-0955
Executive Board	Don Smith	W2III	732 505-4821
W2HC Trustee	Don Smith	W2III	732 505-4821

Membership is open to all interested persons. Ham license is not required. Dues are \$20.00 per year, payable Jan 1st. Members joining during the year will have the dues prorated. Family membership \$30.00.

Meetings are held on the first Thursday of every month, at 7:00 pm. Location: Meeting Room #1 in the Holiday City South Clubhouse. Directions: Go to Mule Rd. and to the corner of Santiago Dr. Turn into Santiago Dr., then into the parking lot in front of the pool. Enter bldg. On right.

The SKYHOOK is published monthly.

Editor and Publisher:

John Roberts [KQ4WR](#) phone: 732 350-1162 E-mail KQ4WR@arrl.net

Send all newsletter items to: John Roberts

7 Lincoln Ct. Whiting, NJ 08759-1505, or e-mail KQ4WR@arrl.net

The 160 Meter Band

“The Gentleman's Band”

The 160 meter band, 1800-2000 kHz, sits just a little above the AM broadcast band. In fact, an AM signal on 1880kHz, for example, may be heard as an image on some broadcast band radios by tuning to 970kHz.

Antennas for 160m:

For die-hards who have enough real estate for a long "inverted-L" antenna, 160 is a worthy adventure, but when properly matched with an antenna tuner, a simple 40 foot wire and a good ground will do.

Now that GPS has made LORAN obsolete, the main communications problems are lightning, power line noise, and household appliances. It's not unusual to have an S7 noise level, so a small rotatable loop antenna, or a resonant coil on a ferrite rod may be advantageous for receiving. Unfortunately, they're useless for transmitting.

You may find that you need the receiver's input attenuator "in" to copy SSB and PSK signals clearly

For transmitting you can use an inverted L, fed at the bottom, and a really good ground, or you can use an inverted "V" or an "M" shaped antenna, fed at the center. Center-fed antennas are good choices, as they don't require a good RF ground, but any antenna will still require a good power ground for the lightning arrester.

Frequency Allocations:

All classes above Technician are allowed to use all the usual modes throughout the band, but please reserve the 1810 to 1830 DX window for CW only.

With 50 watts, you can work Maine. DX normally requires a lot more power.

Very early in the morning is the best time, because that's when the D-layer absorption is lowest, and most computers and TV sets are turned off.

Preferred Usage:

1800-1810 Narrowband Digital Modes

1810 CW QRP

1810-1830 CW DX

1830-1840 CW

1843-1880 SSB (LSB) & SSTV

1880 - 1890 SSB (LSB) & AM

1910 QRP SSB (LSB)

1915 - 1995 SSB (LSB) Rag Chews & Nets

1999 - 2000 Experimental & Beacons



Meet Murray Goldberg, KD2IN

He was the young relief operator the union sent WNEW for the lonely, boring early Sunday morning shift that nobody wanted.

He could hear some Teletypes in a cubicle down the hallway banging out stuff like ship arrivals and Australian soccer scores.

Suddenly one of the machines started ringing its bell. Not just one clang, but more like an alarm.

Soon all the Teletypes were doing it. The first message read: "BLACK PLANES ARE ATTACKING PEARL HARBOR". Of course, it was December 7, 1941.

Since then, Murray has worked for WPAT, WCNB, WLIB, as well as NBC TV, bringing us the sound of The Kate Smith Hour, The Lucky Strike Hit Parade (remember Dorothy Collins?), and many others.

He installed and serviced theatre sound systems for Altec Sound for 20 years.

He is the founder of Holiday City Amateur Radio Club.

Since then he has been President, Vice President, Treasurer, Secretary, and newsletter (and later Skyhook) Editor.

Also, he has been responsible for organizing field trips, program planning for meetings,

And all those impressive certificates we present?

Every one is an example of Murray's craftsmanship.

How's DX

**Between April 15 and May 14,
Russ, WA2VQV, worked:**

30m CW	5WoM	Samoa
20m CW	S575FOC	Slovenia
20m CW	TS8TI	AF-083 Djerba Is., Tunisia
17m CW	GB75FOC	England
17m CW	GN4FOC	Northern Ireland
17m CW	GP4FOC	Guernsay
17m CW	IA5A	EU-028 Giglio Is., Italy
17m CW	IloFOC	Italy
17m CW	OK7FOC	Czech Republic
17m CW	RA1AOB	European Russia
17m CW	S575FOC	Slovenia
15m CW	GP4FOC	Guernsey
15m CW	JD1BMH	Ogasawara (ChiChi Jima)
15m CW	MoRSE	England (FOC)
15m CW	RI1FJ	Franz Josef Land
15m CW	S575FOC	Slovenia
12m CW	IloFOC	Italy
12m CW	VP2EAQ	Anguilla
20m SSB	CT1DQV	Portugal
20m SSB	TA3AX	Turkey
10m SSB	5WoM	Samoa

During May 2013 the First Class Operator Club (FOC) is celebrating their 75th anniversary.

See the FOC web site for info on qualifying for their certificate.

Larry K2QDY worked:

30m	F8DGY	France
30m	J75PX	Dominica
30m	UT5ZC	Russia
30m	UX3HX	Ukraine
30m	4J20RO	Azerbaijan
30m	9H1AL	Malta
20m SSB	7Z1C	Saudi Arabia
20m SSB	DR1A	Germany
20m SSB	EA8AH	Spain
20m SSB	IZ0VXL	Italy

20m SSB	IW2NOY	Italy
20m SSB	SJ2W	Sweden
20m SSB	VK7DX	Australia
20m CW	5A6ZQ	Libya
20m CW	YV5DTJ	Venezuela
17m CW	3Z6M	Poland
17m CW	4A2I	Mexico
17m CW	4Z5CX	Israel
17m CW	9A2N	Croatia
17m CW	A45XR	Oman
17m CW	CO8LY	Cuba
17m CW	EA5GH	Spain
17m CW	FG5FR	St Martin
17m CW	EW8EO	Belarus
17m CW	H70ORO	Nicaragua
17m CW	HA8QZ	Hungary
17m CW	IW1GIO	Italy
17m CW	J75PX	Dominica
17m CW	JA7BXS	Japan
17m CW	LU5MR	Argentina
17m CW	MIOITP	Ireland
17m CW	ON6VL	Belgium
17m CW	OM3LK	Belgium
17m CW	S57DX	Slovak Rep
17m CW	SP2YY	Poland
17m CW	SU9AF	Egypt
17m CW	TA1FA	Turkey
17m CW	UA3KW	Turkey
17m CW	UT1AA	Turkey
17m CW	UW5ZM	Turkey
17m CW	UX5UW	Russia
17m CW	XE1XR	Mexico
17m CW	Z30U	Macedonia

JUNE 2013 NG3K ANNOUNCED DX OPERATIONS														Naut.	Azi.	Grid			
Start	End	Entity	Callsign	QTH	QSL via	Lat	Lon	Miles	Deg	Sqr	Con./	ITUCQ	Bands	Modes	QRB	QSE	MCS	IOTA	
Mar25	Oct	Asiatic Russia	RV3EFH	Bolshevik I	RZ3EA	79	102	1689	169	OQ18fp	AS-042	22 18							
May15	Jun15	Afghanistan	T6JP	Panjwai		32	65	5962	034	MM21rm	AS	40 21	160-6m	CS					
May15	Jun15	Prince Edw. &	ZS8	Marion I	QRZ.com	-47	38	7901	302	KE83vd	AF-077	57 38	40-10m	DS					
May16	Jun11	Turks & Caicos	VP5/W5CW	Caicos		22	-72	1100	173	FL41ds	NA-002	11 08	160-6m	CS					
May20	Jun04	Malta	9H25Y		PI4KGL	36	14	3694	053	JM75fr	EU-023	28 15	80-6m	CJPS					
May20	Jun06	Croatia	9A/PA4JJ	Porec		45	14	4249	052	JN65tf	EU	28 15	WARC	D					
May23	Jun05	Greece	SW8WW	Thassos I		41	25	3467	043	KN20hq	EU-174	28 20							
May25	Jun01	Denmark	5P9Z	Bornholm I		55	15	3467	041	JO75ld	EU-030	18 16							
May25	Jun01	Sweden	SM7DAY	Senoren I		56	16	3483	036	JO76vd	EU-138	18 14							
May25	Jun06	Aland Is	OH0			60	20	7132	100	JP90wc	EU-002	18 15	HF+2m	CRS					
May28	Jun01	Mozambique	C91GR	Bilene	ZS6AYU	-25	33	1979	027	KG64pr	AF	53 37							
May29	Jun05	Greenland	OX3LX	Tasillaq I	OZ1PIF	66	-38	7365	288	HP15eo	NA-151	5 40	HF+6m						
Jun01	Jun04	Solomon Is	H44IOTA	New Georgia		-8	160	1979	027	QI91ss	OC-149	51 28							
Jun01	Jun07	Fiji	3D2WN	Fiji	AA2WN	-18	118	7365	288	OH82sl	OC-016	56 32	160-2m	CPS					
Jun03	Jun10	St Barthelemy	FJ	St Barthelemy		18	-63	9323	332	FK87ov	NA-146	11 08	80-6m	C&RS					
Jun03	Jun20	Cape Verde Is	D44TWO		M00XO	15	-24	1451	153	HK84ex	AF-005	46 35	HF						
Jun04	Jun05	Bretange France	TMOBIG	La Petite Ile	F4FET	49	-3	3032	105	IN88gt	EU-107	27 14							
Jun04	Jun16	Bonaire	PJ4V		LotW	12	-68	2971	055	FK52ud	SA-006	11 09		S					
Jun05	Jun14	French Guiana	FYS	Royale, Alou I	F5UII	5	-53	1698	168	GJ35rg	SA-020	12 09							
Jun06	Jun08	Solomon Is	H44IOTA	Russell Is		-9	159	2971	055	QI90nw	OC-168	51 28							
Jun07	Jun09	Indonesia	YE3I	Jili Ketapang		-2	110	2387	145	OI48xd	OC-237	54 28							
Jun08	Jun15	Bahamas	C6ATT	New Prov'nce I	Home Call	25	-77	7414	288	FL15hb	NA-001	11 08	80-10m	JPRS					
Jun10	Jun13	Solomon Is	H44IOTA	Florida Is		-9	160	8503	353	RI01ca	OC-158	51 28							
Jun11	Jun28	St Martin	FS	St Martin	LotW	18	-63	908	191	FK88lb	NA-105	46 35	80-6m						
Jun13	Jun17	Cuba	T46C	Santa Maria I	EA5GL	23	-79	1435	153	FL02lp	NA-204	11 8	All	CRS					
Jun14	Jun28	Br Virgin Is	VP2V	Anegada	W9DR	19	-64	1067	195	FK78tr	NA-023	11 08	6m	S					
Jun16	Jun20	Honduras	HQ8S	Swan Is	KD4POJ	17	-84	1372	155	EK87aj	NA-035	11 07							
Jun16	Jun30	Svalbard	JW9JKA		LA9JKA	78	16	1444	203	JQ88aa	EU	18 40							
Jun17	Jun24	Solomon Is	H44IOTA	Stewart I		-47	168	3068	015	RE33va	OC-085	51 28							
Jun20	Jul01	Belize	V31IV	San Pedro	W6JKV	18	-88	8137	059	EK67aw	NA-073	11 07	80-6m						
Jun22	Jun29	Guantanamo	KG4	FK29kv	Home Call	20	-75	8137	059	FK29kv	NA	11 08	HF	C					
Jun28	Jul07	Curacao	PJ2		LotW	12	-69	1502	212	FK52me	SA-099	11 09	15-6m						
Jun30	Jul05	Luxembourg	LX		ON6ZV	50	6	1205	182	JN39co	EU	27 14	HF	PRS					

MODES: C=CW, D=Digital, J=JT65, P=PSK, R=RTTY, S=SSB, T=TV